

Piston Seals

DXP

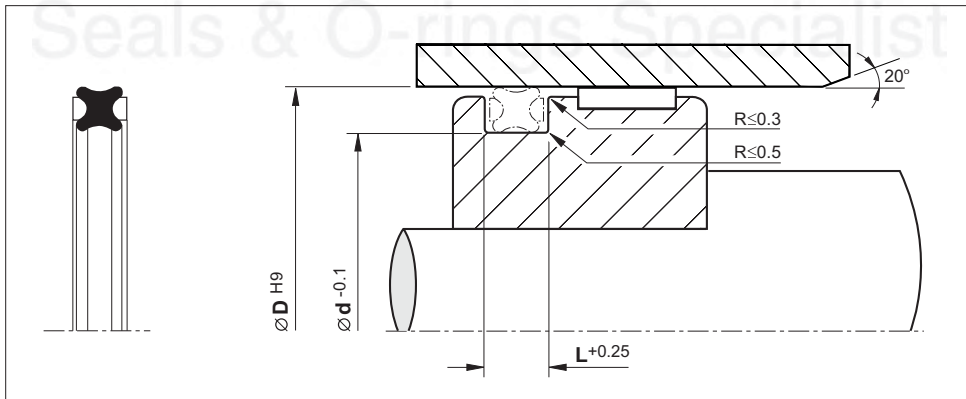
(Metric Size)



Material	Pressure (Bar)	Temp. (°c)	Speed (m/s)
NBR	10	-40 +90	1

- Good sealing performance.
- Anti-twisting or rolling.
- High wear resistance.
- Easy installation.

Installation Recommendation



Surface roughness	Ra	Rmax
Sliding surface	$\leq 0.3 \mu\text{m}$	$\leq 2.5 \mu\text{m}$
Surface of housing	$\leq 1.6 \mu\text{m}$	$\leq 6.3 \mu\text{m}$
Sides of housing	$\leq 3.0 \mu\text{m}$	$\leq 15 \mu\text{m}$

Piston - DXP

(Metric Size)

Bore Dia.	Groove Dia.	Groove Width	Reference (For order processing)
D	d	L	
20.0	14.0	5.0	DXP-020
25.0	19.0	5.0	DXP-025
30.0	24.0	5.0	DXP-030
32.0	26.0	5.0	DXP-032
40.0	32.0	5.0	DXP-040
50.0	42.0	5.0	DXP-050
63.0	53.0	7.0	DXP-063
80.0	70.0	7.0	DXP-080
100.0	90.0	7.0	DXP-100
125.0	110.0	10.0	DXP-125
150.0	135.0	10.0	DXP-150
160.0	145.0	10.0	DXP-160
180.0	165.0	10.0	DXP-180
200.0	185.0	10.0	DXP-200
250.0	235.0	10.0	DXP-250
300.0	285.0	10.0	DXP-300
320.0	305.0	10.0	DXP-320

Seals & O-rings Specialist