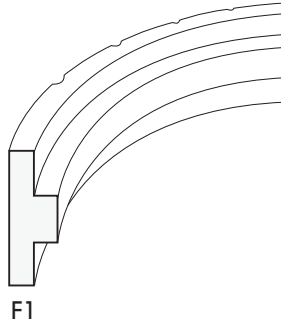
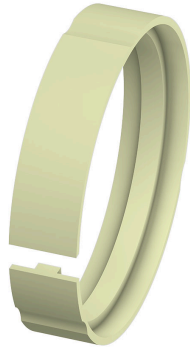


Wear Rings

F1

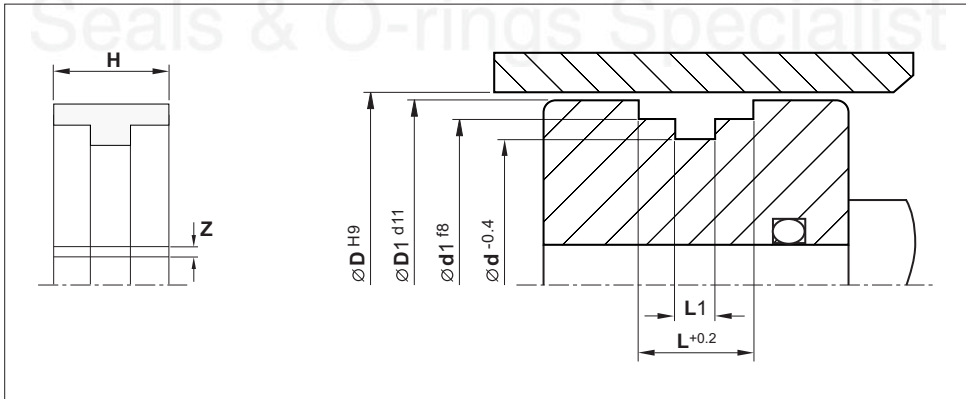
(Metric Size)



Material	Temp. (°C)	Speed (m/s)
Polyamide	-40 +100	5

- Easy to install.
- Extremely durable material.
- Can be cut additionally for intermediate sizes.
- Low cost.

Installation Recommendation



Surface roughness	Ra	Rt
-------------------	----	----

Sliding surface	$\leq 0.3 \mu\text{m}$	$\leq 4 \mu\text{m}$
Surface of housing	$\leq 1.8 \mu\text{m}$	$\leq 10 \mu\text{m}$
Sides of housing	$\leq 3.0 \mu\text{m}$	$\leq 16 \mu\text{m}$

Guide Ring - F1

(Metric Size)

Bore Dia.	Groove Dimensions					Seal Height	Ring Gap	Reference (For order processing)
	D	D1	d1	d	L			
20.0	19.65	17.2	14.0	8.5	3.1	7.8	1.0	F1 2005 W5007
22.0	21.65	19.2	16.0	8.5	3.1	7.8	2.0	F1 2012 W5007
25.0	24.65	22.2	19.0	8.5	3.1	7.8	2.0	F1 2030 W5007
28.0	27.65	25.2	22.0	8.5	3.1	7.8	2.0	F1 2035 W5007
30.0	29.65	27.2	24.0	8.5	3.1	7.8	2.0	F1 3010 W5007
32.0	31.65	29.2	26.0	8.5	3.1	7.8	2.0	F1 3014 W5007
35.0	34.65	32.2	29.0	8.5	3.1	7.8	2.0	F1 3030 W5007
36.0	35.65	33.2	30.0	8.5	3.1	7.8	2.0	F1 3034 W5007
40.0	39.6	36.8	32.5	10.5	3.6	9.8	2.0	F1 4005 W5007
42.0	41.6	38.8	34.5	10.5	3.6	9.8	2.0	F1 4008 W5007
45.0	44.6	41.8	37.5	10.5	3.6	9.8	2.0	F1 4012 W5007
50.0	49.6	46.8	42.5	10.5	3.6	9.8	2.0	F1 5005 W5007
55.0	54.6	51.9	47.5	10.5	3.6	9.8	3.0	F1 5025 W5007
56.0	55.6	52.9	48.5	10.5	3.6	9.8	3.0	F1 5030 W5007
58.0	57.6	54.9	50.5	10.5	3.6	9.8	3.0	F1 5045 W5007
60.0	59.6	56.9	52.5	10.5	3.6	9.8	3.0	F1 6005 W5007
63.0	62.5	59.5	54.0	15.0	5.0	14.3	3.0	F1 6020 W5007
65.0	64.5	61.5	56.0	15.0	5.0	14.3	3.0	F1 6030 W5007
70.0	69.5	66.5	61.0	15.0	5.0	14.3	3.0	F1 7005 W5007
75.0	74.5	71.5	66.0	15.0	5.0	14.3	3.0	F1 7040 W5007
78.0	77.5	74.5	69.0	15.0	5.0	14.3	3.0	F1 7078 W5007
80.0	79.5	76.5	71.0	15.0	5.0	14.3	3.0	F1 8005 W5007
82.0	81.5	78.5	73.0	15.0	5.0	14.3	4.0	F1 8010 W5007
85.0	84.5	81.5	76.0	15.0	5.0	14.3	4.0	F1 8025 W5007
90.0	89.5	86.5	81.0	15.0	5.0	14.3	4.0	F1 9005 W5007
95.0	94.4	91.5	86.0	15.0	5.0	14.3	4.0	F1 9025 W5007
100.0	99.4	96.5	91.0	15.0	5.0	14.3	4.0	F1 A005 W5007
105.0	104.4	101.5	96.0	15.0	5.0	14.3	4.0	F1 A025 W5007
110.0	109.4	106.5	101.0	15.0	5.0	14.3	4.0	F1 B005 W5007
115.0	114.4	111.5	106.0	15.0	5.0	14.3	5.0	F1 B040 W5007
120.0	119.4	116.5	111.0	15.0	5.0	14.3	5.0	F1 C005 W5007
125.0	124.4	121.5	116.0	15.0	5.0	14.3	5.0	F1 C040 W5007
130.0	129.4	126.5	121.0	15.0	5.0	14.3	5.0	F1 D005 W5007
135.0	134.4	131.5	126.0	15.0	5.0	14.3	6.0	F1 D030 W5007
140.0	139.4	136.5	131.0	15.0	5.0	14.3	6.0	F1 E005 W5007
150.0	149.4	146.5	141.0	15.0	5.0	14.3	6.0	F1 F005 W5007
152.6	152.0	149.1	143.6	15.0	5.0	14.3	6.0	F1 F025 W5007
160.0	159.3	152.9	144.0	20.3	8.0	19.8	6.0	F1 G005 W5007
170.0	169.3	162.9	154.0	20.3	8.0	19.8	7.0	F1 H005 W5007
180.0	179.3	172.9	164.0	20.3	8.0	19.8	7.0	F1 J005 W5007
185.0	184.3	177.9	169.0	20.3	8.0	19.8	7.0	F1 J020 W5007
190.0	189.3	182.9	174.0	20.3	8.0	19.8	7.0	F1 K005 W5007
195.0	194.3	187.9	179.0	20.3	8.0	19.8	8.0	F1 K050 W5007
200.0	199.3	192.9	184.0	20.3	8.0	19.8	8.0	F1 L005 W5007
220.0	219.2	212.5	203.0	25.0	8.0	24.5	9.0	F1 M005 W5007
225.0	224.2	217.5	208.0	25.0	8.0	24.5	9.0	F1 M040 W5007
230.0	229.2	222.5	213.0	25.0	8.0	24.5	9.0	F1 M060 W5007
240.0	239.2	232.5	223.0	25.0	8.0	24.5	9.0	F1 N005 W5007
250.0	249.2	242.5	233.0	25.0	8.0	24.5	10.0	F1 N055 W5007