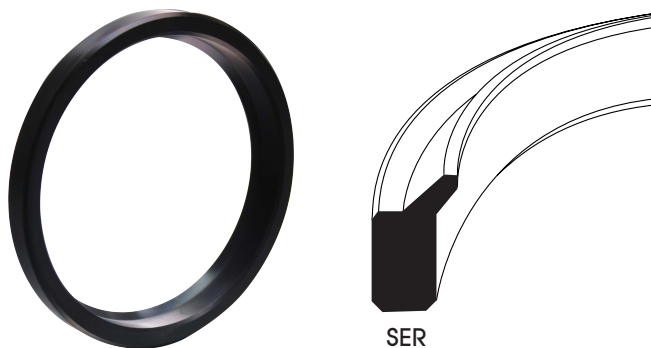


## Wiper

SER

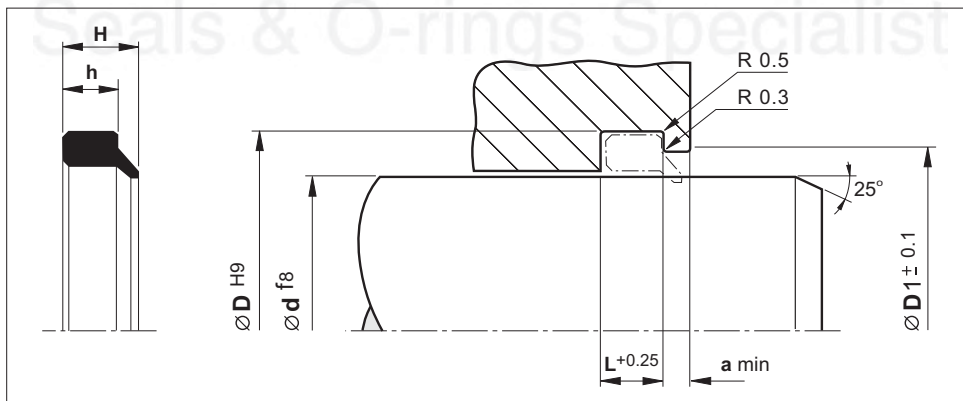
(Metric Size)



Material	Temp. (°C)	Speed (m/s)
NBR	-25 +100	0.5

- Small cross section type.
- High wear resistance.
- For small diameter cylinder placed indoor.
- Economical solution.

### Installation Recommendation



Surface roughness

Ra

Rt

Sliding surface

$\leq 0.3 \mu\text{m}$

$\leq 4 \mu\text{m}$

Surface of housing

$\leq 1.8 \mu\text{m}$

$\leq 10 \mu\text{m}$

Sides of housing

$\leq 3.0 \mu\text{m}$

$\leq 16 \mu\text{m}$

## Wiper - SER

(Metric Size)

Rod Dia.	Groove Dia.	Seal Height	Seal Step Height	Groove Width	Bore Dia.	Step Width	Reference (For order processing)
d	D	H	h	L	D1	a	
3.0	6.0	2.75	2.0	2.5	4.5	1.5	SER-003
4.0	7.0	2.75	2.0	2.5	5.5	1.5	SER-004
5.0	8.0	2.75	2.0	2.5	6.5	1.5	SER-005
6.0	9.0	2.75	2.0	2.5	7.5	1.5	SER-006
7.0	10.0	2.75	2.0	2.5	8.5	1.5	SER-007
8.0	11.0	2.75	2.0	2.5	9.5	1.5	SER-008
9.0	12.0	2.75	2.0	2.5	10.5	1.5	SER-009
10.0	13.0	2.75	2.0	2.5	11.5	1.5	SER-010
10.0	14.0	3.9	2.9	3.2	12.0	1.5	SER-010A
11.2	15.2	3.9	2.9	3.2	13.2	1.5	SER-011.2
12.0	16.0	3.9	2.9	3.2	14.0	1.5	SER-012
12.5	16.5	3.9	2.9	3.2	14.5	1.5	SER-012.5
14.0	18.0	3.9	2.9	3.2	16.0	1.5	SER-014
15.0	19.0	3.9	2.9	3.2	17.0	1.5	SER-015
16.0	20.0	3.9	2.9	3.2	18.0	1.5	SER-016
18.0	22.0	3.9	2.9	3.2	20.0	1.5	SER-018
20.0	24.0	3.9	2.9	3.2	22.0	1.5	SER-020
22.0	26.0	3.9	2.9	3.2	24.0	1.5	SER-022
22.0	28.0	5.8	4.3	4.7	25.0	2.0	SER-022A
22.4	28.4	5.8	4.3	4.7	25.4	2.0	SER-022.4
24.0	30.0	5.8	4.3	4.7	27.0	2.0	SER-024
25.0	31.0	5.8	4.3	4.7	28.0	2.0	SER-025
26.0	32.0	5.8	4.3	4.7	29.0	2.0	SER-026
28.0	34.0	5.8	4.3	4.7	31.0	2.0	SER-028
30.0	36.0	5.8	4.3	4.7	33.0	2.0	SER-030
31.0	37.0	5.8	4.3	4.7	34.0	2.0	SER-031
31.5	37.5	5.8	4.3	4.7	34.5	2.0	SER-031.5
32.0	38.0	5.8	4.3	4.7	35.0	2.0	SER-032
34.0	40.0	5.8	4.3	4.7	37.0	2.0	SER-034
35.0	41.0	5.8	4.3	4.7	38.0	2.0	SER-035
35.5	41.5	5.8	4.3	4.7	38.5	2.0	SER-035.5
36.0	42.0	5.8	4.3	4.7	39.0	2.0	SER-036
38.0	44.0	5.8	4.3	4.7	41.0	2.0	SER-038
40.0	46.0	5.8	4.3	4.7	43.0	2.0	SER-040
41.0	47.0	5.8	4.3	4.7	44.0	2.0	SER-041
42.0	48.0	5.8	4.3	4.7	45.0	2.0	SER-042
44.0	50.0	5.8	4.3	4.7	47.0	2.0	SER-044
45.0	51.0	5.8	4.3	4.7	48.0	2.0	SER-045
46.0	52.0	5.8	4.3	4.7	49.0	2.0	SER-046
48.0	54.0	5.8	4.3	4.7	51.0	2.0	SER-048

## Wiper - SER

(Metric Size)

Rod Dia.	Groove Dia.	Seal Height	Seal Step Height	Groove Width	Bore Dia.	Step Width	Reference (For order processing)
d	D	H	h	L	D1	a	
48.0	58.0	9.4	6.9	7.5	53.0	3.0	SER-048A
50.0	56.0	5.8	4.3	4.7	53.0	2.0	SER-050
50.0	60.0	9.4	6.9	7.5	55.0	3.0	SER-050A
52.0	62.0	9.4	6.9	7.5	57.0	3.0	SER-052
53.0	63.0	9.4	6.9	7.5	58.0	3.0	SER-053
55.0	65.0	9.4	6.9	7.5	60.0	3.0	SER-055
56.0	66.0	9.4	6.9	7.5	61.0	3.0	SER-056
58.0	68.0	9.4	6.9	7.5	63.0	3.0	SER-058
60.0	70.0	9.4	6.9	7.5	65.0	3.0	SER-060
62.0	72.0	9.4	6.9	7.5	67.0	3.0	SER-062
63.0	73.0	9.4	6.9	7.5	68.0	3.0	SER-063
65.0	75.0	9.4	6.9	7.5	70.0	3.0	SER-065
67.0	77.0	9.4	6.9	7.5	72.0	3.0	SER-067
70.0	80.0	9.4	6.9	7.5	75.0	3.0	SER-070
71.0	81.0	9.4	6.9	7.5	76.0	3.0	SER-071
75.0	85.0	9.4	6.9	7.5	80.0	3.0	SER-075
80.0	90.0	9.4	6.9	7.5	85.0	3.0	SER-080
85.0	95.0	9.4	6.9	7.5	90.0	3.0	SER-085
90.0	100.0	9.4	6.9	7.5	95.0	3.0	SER-090
95.0	105.0	9.4	6.9	7.5	100.0	3.0	SER-095
100.0	110.0	9.4	6.9	7.5	105.0	3.0	SER-100