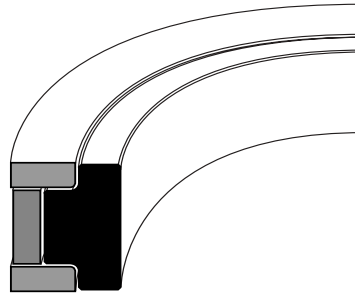


Piston Seals (Double Acting)

SPGW

(Metric Size)

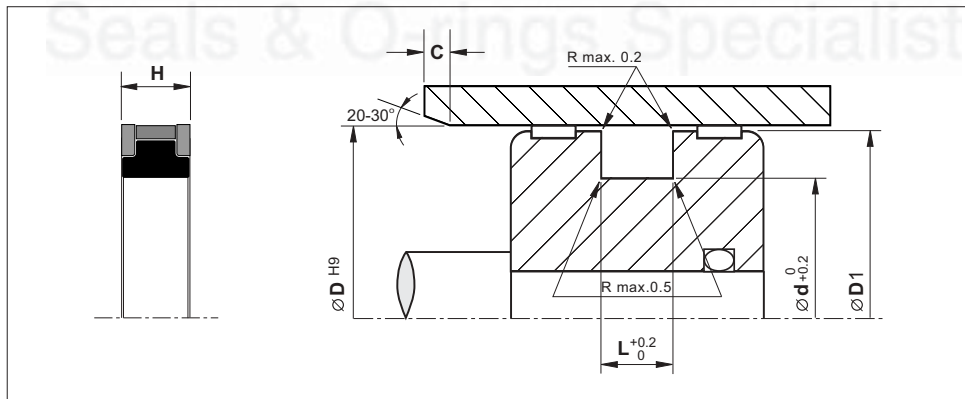


SPGW

Material	Pressure (Bar)	Temp. (°C)	Speed (m/s)
PTFE+Bronze - NBR - PA	500	-40 +120	1.5

- High extrusion resistance.
- Excellent sealing efficiency.
- High wear resistance.
- For closed or split installation groove.

Installation Recommendation



Surface roughness	Ra	Rt	Chamfers	
Sliding surface	≤ 0.3 µm	≤ 4 µm	D	C
Surface of housing	≤ 1.8 µm	≤ 10 µm	< 60	4.0
Sides of housing	≤ 3.0 µm	≤ 16 µm	60-110	5.0
			110-250	6.5
			250-320	7.5

PTFE Seal Set - SPGW



(Metric Size)

Bore Dia.	Groove Dia.	Groove Width	Piston Dia.	Seal Height	Reference (For order processing)
D	d	L	D1	H	
50.0	36.0	9.0	49.5	8.5	SPGW-050
60.0	46.0	9.0	59.5	8.5	SPGW-060
70.0	55.0	11.0	69.5	10.5	SPGW-070
80.0	65.0	11.0	79.5	10.5	SPGW-080
90.0	75.0	11.0	89.5	10.5	SPGW-090
100.0	85.0	12.5	99.5	12.0	SPGW-100
108.0	93.0	12.5	107.5	12.0	SPGW-108
110.0	95.0	12.5	109.5	12.0	SPGW-110
120.0	105.0	12.5	119.5	12.0	SPGW-120
125.0	102.0	16.0	124.5	15.5	SPGW-125
130.0	107.0	16.0	129.5	15.5	SPGW-130
140.0	117.0	16.0	139.5	15.5	SPGW-140
150.0	127.0	16.0	149.5	15.5	SPGW-150
160.0	137.0	16.0	159.5	15.5	SPGW-160
170.0	147.0	16.0	169.5	15.5	SPGW-170
180.0	157.0	16.0	179.5	15.5	SPGW-180
185.0	162.0	16.0	184.5	15.5	SPGW-185
190.0	167.0	16.0	189.5	15.5	SPGW-190
200.0	177.0	16.0	199.5	15.5	SPGW-200
210.0	187.0	16.0	209.5	15.5	SPGW-210
220.0	197.0	16.0	219.5	15.5	SPGW-220
225.0	202.0	16.0	224.5	15.5	SPGW-225
230.0	207.0	16.0	229.5	15.5	SPGW-230
240.0	217.0	16.0	239.5	15.5	SPGW-240
250.0	222.0	17.5	249.5	17.0	SPGW-250
260.0	232.0	17.5	259.5	17.0	SPGW-260
270.0	242.0	17.5	269.5	17.0	SPGW-270
272.0	244.0	17.5	271.5	17.0	SPGW-272
280.0	252.0	17.5	279.5	17.0	SPGW-280
287.0	259.0	17.5	286.5	17.0	SPGW-287
300.0	272.0	17.5	299.5	17.0	SPGW-300
320.0	292.0	17.5	319.5	17.0	SPGW-320