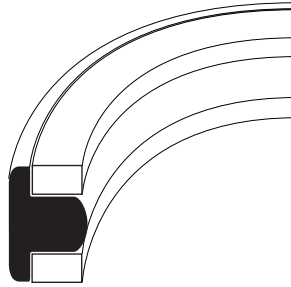


Rod Seals

TR

(Inch Size)

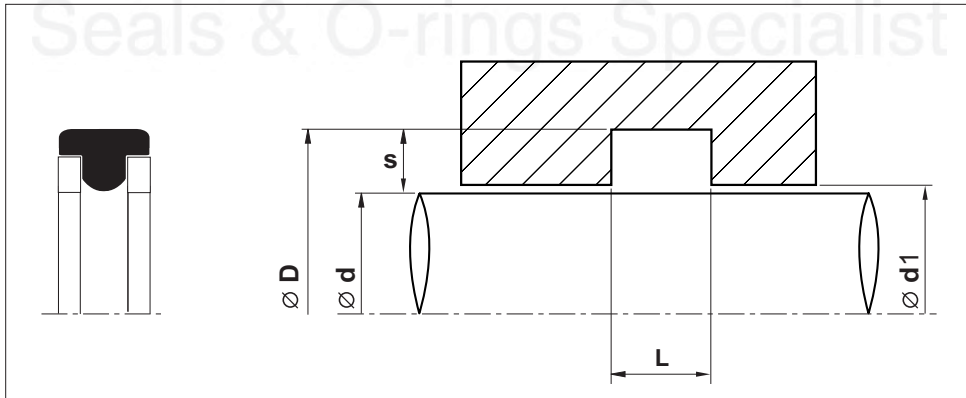


TR

Material	Pressure (Bar)	Temp. (°c)	Speed (m/s)
NBR - POM	350	-30 +110	1

- High wear resistance.
- Low friction.
- Stability of the sliding ring under rapid pressure change.
- High extrusion resistance.

Installation Recommendation



Surface roughness

$\mu\text{in CLA}$

Sliding surface

4 to 16

Surface of housing

63 max

Sides of housing

125 max

Rod T-Seal



(Inch Size)

Nominal size			Rod Dia.	Groove Dia.	Groove Width	Diameter	O-RING No.	Reference (For ordering)
ID	OD	S	d	D	L	d1		
3/16	3/8	3/32	.186±.001	.370+.000-.002	.150+.005-.000	.189±.001	106	TR-001
1/4	7/16	3/32	.248	.433	.150	.251	108	TR-002
5/16	1/2	3/32	.310	.495	.150	.313	109	TR-003
3/8	5/8	1/8	.373	.618	.185	.376	204	TR-004
7/16	11/16	1/8	.435	.680	.185	.438	205	TR-005
1/2	3/4	1/8	.498	.743	.185	.501	206	TR-006
9/16	13/16	1/8	.560	.805	.185	.563	207	TR-007
5/8	7/8	1/8	.623	.868	.185	.626	208	TR-008
11/16	15/16	1/8	.685	.930	.185	.688	209	TR-009
3/4	1	1/8	.747	.992	.185	.750	210	TR-010
13/16	1-1/16	1/8	.809	1.054	.185	.812	211	TR-011
7/8	1-1/8	1/8	.872	1.117	.185	.875	212	TR-012
15/16	1-3/16	1/8	.934	1.179	.185	.937	213	TR-013
1	1-1/4	1/8	.997	1.242	.185	1.000	214	TR-014
1-1/16	1-5/16	1/8	1.059	1.304	.185	1.062	215	TR-015
1-1/8	1-3/8	1/8	1.122	1.367	.185	1.125	216	TR-016
1-3/16	1-7/16	1/8	1.184	1.429	.185	1.187	217	TR-017
1-1/4	1-1/2	1/8	1.247	1.492	.185	1.250	218	TR-018
1-5/16	1-9/16	1/8	1.309	1.554	.185	1.312	219	TR-019
1-3/8	1-5/8	1/8	1.372	1.617	.185	1.375	220	TR-020
1-7/16	1-11/16	1/8	1.434	1.679	.185	1.437	221	TR-021
1-1/2	1-3/4	1/8	1.497	1.742	.185	1.500	222	TR-022
1-1/2	1-7/8	3/16	1.497	1.871	.280	1.500	325	TR-023
1-5/8	2	3/16	1.622	1.996	.280	1.625	326	TR-024
1-3/4	2-1/8	3/16	1.747	2.121	.280	1.750	327	TR-025
1-7/8	2-1/4	3/16	1.872	2.246	.280	1.875	328	TR-026
2	2-3/8	3/16	1.997	2.371	.280	2.000	329	TR-027
2-1/8	2-1/2	3/16	2.122	2.496	.280	2.125	330	TR-028
2-1/4	2-5/8	3/16	2.247	2.613	.280	2.250	331	TR-029
2-3/8	2-3/4	3/16	2.372±.002	2.746+.001-.003	.280	2.377±.002	332	TR-030
2-1/2	2-7/8	3/16	2.497	2.871	.280	2.502	333	TR-031
2-5/8	3	3/16	2.622	2.996	.280	2.627	334	TR-032
2-3/4	3-1/8	3/16	2.747	3.121	.280	2.752	335	TR-033
2-7/8	3-1/4	3/16	2.872	3.246	.280	2.877	336	TR-034
3	3-3/8	3/16	2.996	3.370	.280	3.001	337	TR-035
3-1/8	3-1/2	3/16	3.121±.002	3.495+.001-.003	.280+.005-.000	3.126±.002	338	TR-036
3-1/4	3-5/8	3/16	3.246	3.620	.280	3.251	339	TR-037
3-3/8	3-3/4	3/16	3.371	3.745	.280	3.376	340	TR-038
3-1/2	3-7/8	3/16	3.496	3.870	.280	3.501	341	TR-039
3-5/8	4	3/16	3.621	3.995	.280	3.626	342	TR-040

Rod T-Seal

(Inch Size)

Nominal size			Rod Dia.	Groove Dia.	Groove Width	Diameter	O-RING No.	Reference (For ordering)
ID	OD	S	d	D	L	d1		
3-3/4	4-1/8	3/16	3.746±.002	4.120+.001-.003	.280+.005-.000	3.751±.002	343	TR-041
3-7/8	4-1/4	3/16	3.871	4.245	.280	3.876	344	TR-042
4	4-3/8	3/16	3.996	4.370	.280	4.001	345	TR-043
4-1/8	4-1/2	3/16	4.121	4.495	.280	4.126	346	TR-044
4-1/4	4-5/8	3/16	4.246	4.620	.280	4.251	347	TR-045
4-3/8	4-3/4	3/16	4.371	4.745	.280	4.376	348	TR-046
4-1/2	4-7/8	3/16	4.496	4.870	.280	4.501	349	TR-047
5	5-1/2	1/4	4.996	5.475	.366	5.001	429	TR-048
5-1/4	5-3/4	1/4	5.246	5.725	.366	5.251	431	TR-049
5-1/2	6	1/4	5.496	5.975	.366	5.501	433	TR-050
5-5/8	6-1/8	1/4	5.621	6.100	.366	5.626	434	TR-051
6	6-1/2	1/4	5.996±.003	6.475+.002-.004	.366	6.003±.003	437	TR-052
6-1/4	6-3/4	1/4	6.246	6.725	.366	6.253	438	TR-053
6-1/2	7	1/4	6.496	6.975	.366	6.503	439	TR-054
6-3/4	7-1/4	1/4	6.746	7.225	.366	6.753	440	TR-055
7	7-1/2	1/4	6.996	7.475	.366	7.003	441	TR-056
7-1/4	7-3/4	1/4	7.246	7.725	.366	7.253	442	TR-057
7-1/2	8	1/4	7.500	7.984	.366	7.507	443	TR-058
8	8-1/2	1/4	7.996	8.475	.366	8.003	445	TR-059
9	9-1/2	1/4	8.996	9.475	.366	9.003	447	TR-060
9-1/2	10	1/4	9.496	9.975	.366	9.503	448	TR-061
10	10-1/2	1/4	9.996	10.475	.366	10.003	449	TR-062
11	11-1/2	1/4	10.996	11.475	.366	11.003	451	TR-063
11-1/2	12	1/4	11.500	11.979	.366	11.507	452	TR-064
12	12-1/2	1/4	11.996	12.475	.366	12.003	453	TR-065