

## Piston Seals

Z5

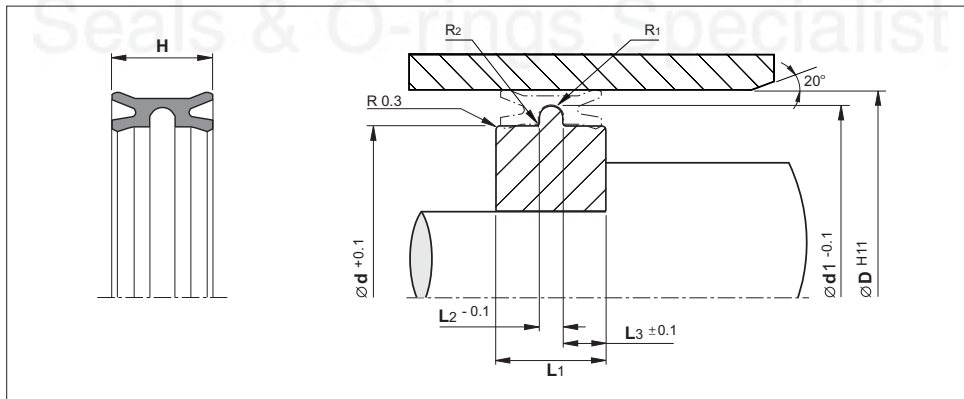
(Metric Size)



Material	Pressure (Bar)	Temp. (°C)	Speed (m/s)
NBR	16	-30 +80	1

- No metallic contact between piston and cylinder.
- Smooth running due to optimized sealing lip.
- For use in dry and oil free air.
- Easy assembly on one piece piston.

### Installation Recommendation



Surface roughness	Ra	Rmax
Sliding surface	$\leq 0.3 \mu\text{m}$	$\leq 2.5 \mu\text{m}$
Surface of housing	$\leq 1.6 \mu\text{m}$	$\leq 6.3 \mu\text{m}$
Sides of housing	$\leq 3.0 \mu\text{m}$	$\leq 15 \mu\text{m}$

# Piston - Z5

(Metric Size)

Bore Dia.	Groove Dimensions					Seal Height.	Radius		Reference (For order processing)
	D	d	d1	L1	L2		L3	H	
16.0	10.0	13.5	12.0	3.0	4.5	10.5	0.9	0.2	Z5 1610 N
18.0	12.0	15.5	12.0	3.0	4.5	10.5	0.9	0.2	Z5 1812 N
20.0	14.0	17.5	12.0	3.0	4.5	10.5	0.9	0.2	Z5 2014 N
25.0	18.0	22.5	13.0	3.0	5.0	12.0	0.9	0.2	Z5 2518 N
28.0	22.0	25.5	12.0	3.0	4.5	10.5	0.9	0.2	Z5 2822 N
30.0	23.0	27.5	13.0	3.0	5.0	12.0	1.3	0.2	Z5 3023 N
32.0	25.0	29.5	13.0	3.0	5.0	12.0	1.3	0.2	Z5 3225 N
35.0	28.0	32.5	13.0	3.0	5.0	12.0	1.3	0.2	Z5 3528 N
40.0	33.0	37.5	13.0	3.0	5.0	12.0	1.3	0.2	Z5 4033 N
45.0	38.0	42.5	13.0	3.0	5.0	12.0	1.3	0.2	Z5 4538 N
50.0	43.0	47.5	13.0	3.0	5.0	12.0	1.3	0.2	Z5 5043 N
54.0	46.0	51.5	15.0	4.0	5.5	13.0	1.3	0.2	Z5 5446 N
63.0	53.0	60.0	19.0	5.0	7.0	17.0	1.6	0.3	Z5 6353 N
63.0	56.0	60.5	13.0	3.0	5.0	12.0	1.3	0.3	Z5 6356 N
70.0	62.0	67.5	15.0	4.0	5.5	13.0	1.6	0.3	Z5 7007 N
76.0	66.0	73.0	20.0	6.0	7.0	18.0	1.6	0.3	Z5 7666 N
80.0	70.0	77.0	20.0	6.0	7.0	18.0	1.6	0.3	Z5 8070 N
80.0	72.0	77.4	15.0	4.0	5.5	13.0	1.6	0.3	Z5 8067 N
100.0	88.0	96.5	23.0	8.0	7.5	21.0	1.6	0.4	Z5 A088 N
100.0	90.0	97.0	18.0	4.0	7.0	16.0	1.6	0.3	Z5 A089 N
125.0	113.0	122.0	17.0	5.0	6.0	15.0	1.6	0.4	Z5 C511 N
125.0	113.0	121.5	23.0	8.0	7.5	21.0	1.6	0.4	Z5 C513 N
130.0	120.0	127.0	19.0	5.0	7.0	17.0	1.6	0.3	Z5 D017 N
140.0	128.0	136.5	23.0	8.0	7.5	21.0	1.6	0.4	Z5 E028 N
150.0	140.0	147.0	19.0	5.0	7.0	17.0	1.6	0.3	Z5 F014 N
160.0	145.0	155.5	29.0	10.0	9.5	26.0	1.6	0.4	Z5 G045 N
200.0	185.0	195.5	29.0	10.0	9.5	26.0	1.6	0.4	Z5 L085 N